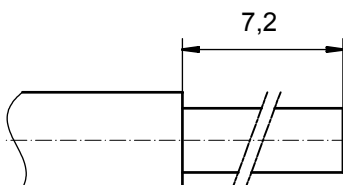


STRIPPING DIMENSIONS



Directive 2002/95/EC
„RoHS“
Compliant

NOTES:

CRIMPING:
USE CRIMP TOOL: 360X10409X
WITH TOOL INSERT: 36-000060
SELECTOR SETTINGS: 3 FOR AWG 16
2 FOR AWG 18
2 FOR AWG 20

| | | | | |
|------|----------|------------------|--------------|---|
| 3 | 1 | REAR SIDE | COPPER ALLOY | min. 8µin HARD GOLD over min. 50µin NICKEL |
| 2 | 1 | RETAINING RING | COPPER ALLOY | NICKEL PLATED |
| 1 | 1 | MATING SIDE | COPPER ALLOY | min. 30µin HARD GOLD over min. 50µin NICKEL |
| item | quantity | part description | material | plating |

| | |
|---|--------|
| APPROVAL # FREIGABE # DEBLOCAGE # AUTORIZACION # APPROVAL | |
| CUSTOMER APPROVAL DATE: | |
| NAME: | TITLE: |
| COMPANY NAME: | |
| APPROVAL # FREIGABE # DEBLOCAGE # AUTORIZACION # APPROVAL | |

| | | | | | | | |
|--|------------------|----------|------|--|------------|--------------------------------------|--------|
| THIS DRAWING MAY NOT BE COPIED OR REPRODUCED IN ANY WAY, AND MAY NOT BE PASSED ON TO A THIRD PARTY WITHOUT WRITTEN PERMISSION. OWNERSHIP AND COPYRIGHT OF CONEC GmbH DO NOT ALTER CAD DRAWING BY HAND | | | | tolerance ISO 2768-m | dim. in mm | scale: 8:1 material: see partlist | |
| date | name | title: | | HIGH POWER CONTACT FEMALE CRIMP VERSION 10A D-SUB COMBINATION | | | |
| drawn | 03.01.08 Schmidt | dwg no: | | | | Inventor 10 | DIN-A3 |
| appd. | 03.01.08 Koch | part no: | | | | 13K1A2381 | sh: 1 |
| norm | d-old | part no: | | | | 13-000291 | |
| a | Origin | CONEC® | | | | | |
| rev. | description | date | name | | | | |