

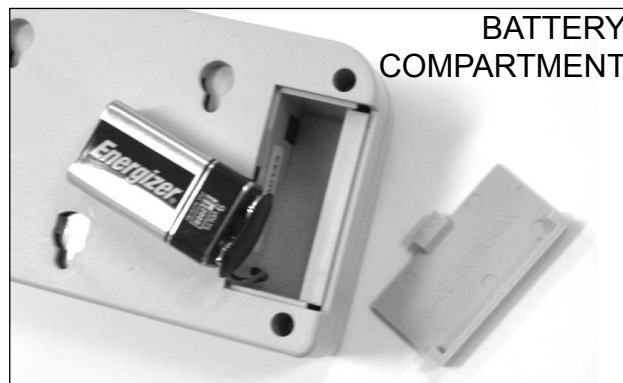
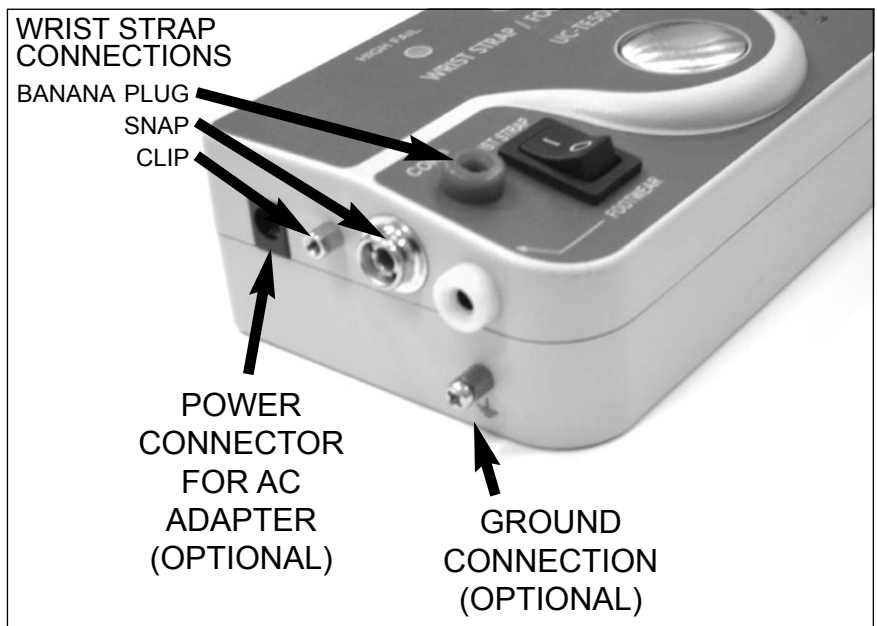
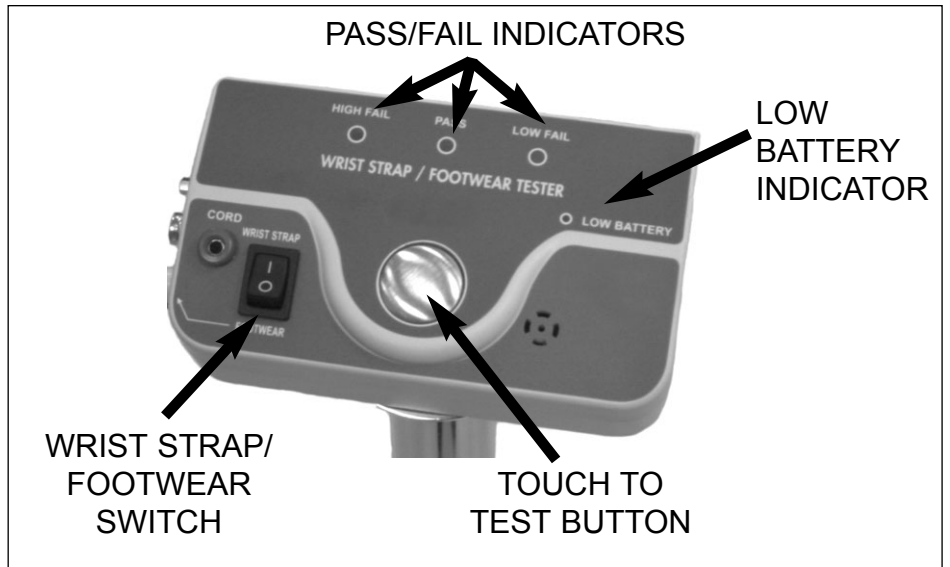
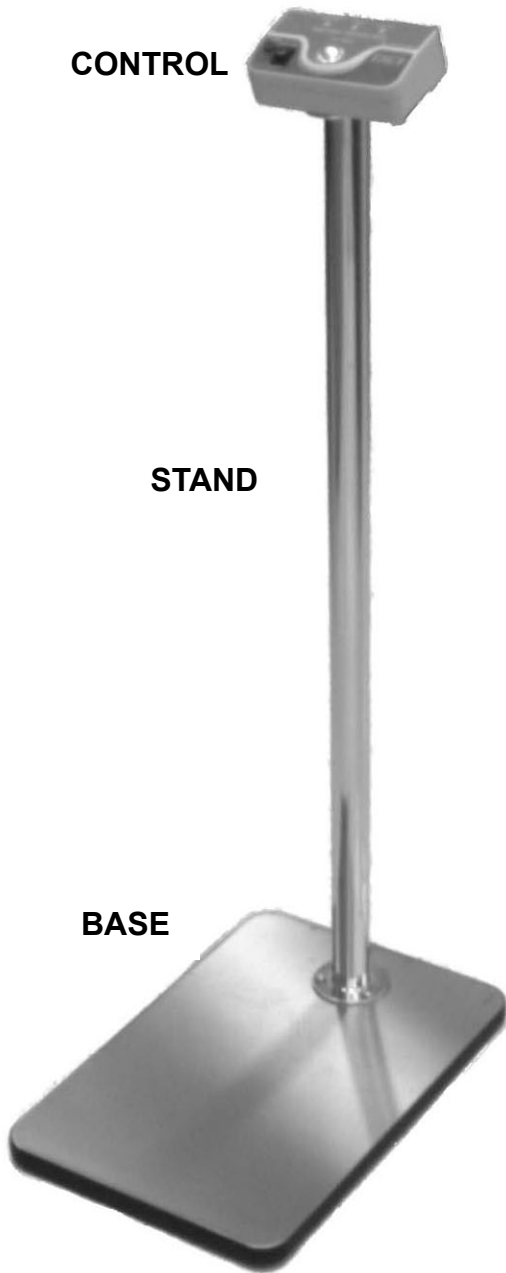
# **Combination Wrist Strap - Footwear Tester**

**P/N: COMBOTESTER**



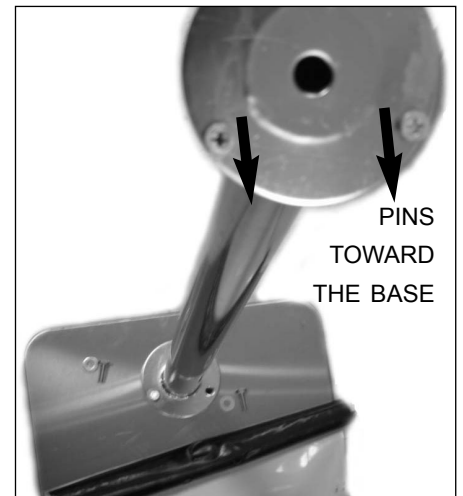
# Combination Wrist Strap - Footwear Tester

## ComboTester Parts Familiarization

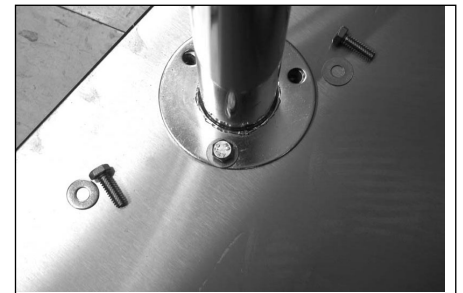


## Assembly Instructions

1. Remove the parts from the packaging materials.
2. Place the base on the floor.
3. Remove the white cover plastic from the base.
4. Put the stand on the base, with the pins at the top.
5. Two pins should face the base.



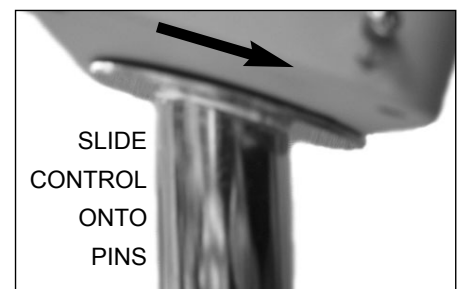
6. Secure the Stand to the Base with three 10mm bolts.
7. Confirm that the battery is in the Control, or if using the AC adapter, remove the battery.



8. Align the slots on the Control with the pins on the Stand.



9. Slide the Control down onto the pins.
10. Connect the power adapter to the Control and 110 AC if not using the battery.



Grounding: If desired, the unit can be grounded by connecting the included wire from the ground point on the Control to a suitable ground.

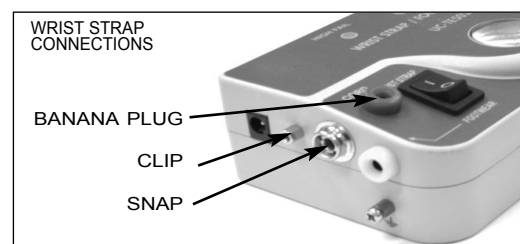
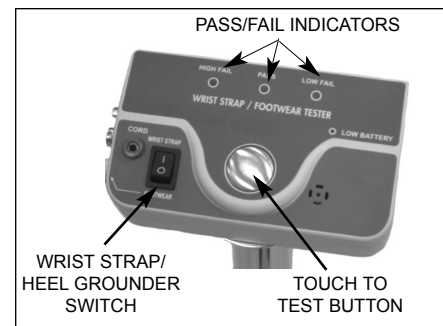
# Combination Wrist Strap - Footwear Tester

## Instructions for Use

### Testing a Wrist Strap

1. Switch the Control to “Wrist Strap”.
2. While wearing the wrist strap, connect the cord to the Control by the banana plug, snap, or clip.
3. Touch the silver button.
4. The Control will test the wrist strap and report:

| <u>Result</u> | <u>Indication</u> | <u>Range</u> |
|---------------|-------------------|--------------|
| High Fail     | Red Light         | >10 megohms  |
| Pass          | Green Light+tone  | 750k-10meg   |
| Low Fail      | Yellow Light      | <750k        |



### Testing Foot Grounders or Shoes

1. Switch the Control to “Footwear”.
2. While wearing the footwear, put one foot onto the Base.
3. Touch the silver button.
4. The Control will test the footwear and report:

| <u>Result</u> | <u>Indication</u> | <u>Range</u> |
|---------------|-------------------|--------------|
| High Fail     | Red Light         | >100 megohms |
| Pass          | Green Light+tone  | 750k-100meg  |
| Low Fail      | Yellow Light      | <750k        |

5. Repeat the test with the other foot.

Note: Do not touch the Stand or any other conductive object while testing. This may interfere with the tester.

# Combination Wrist Strap - Footwear Tester

## Specifications

|                   |                                       |
|-------------------|---------------------------------------|
| Resistance ranges |                                       |
| Wrist Strap:      | 750 kilohm to 10 Megohms              |
| Footwear:         | 750 kilohm to 100 Megohms             |
| Accuracy          | $\pm 10\%$                            |
| Power supply      | 9 volt alkaline battery or AC adapter |

## Calibration Verification

This solid state unit is non-adjustable. However, correct operation may be checked using the following procedure:

### Equipment

Resistance Substitution Box 700kilohm to 110 megohms (Discrete resistors can be used in place of the substitution box.)

Test Leads

### Procedure

Connect the leads of the substitution box to the wrist strap banana jack and to the Press to Test button. Press and hold the "Press to Test" button. Adjust the substitution box to each of the following resistance values. The ComboTester should display the proper indication.

|                  |            |                    |
|------------------|------------|--------------------|
| 750k -10M range: | <u>Box</u> | <u>ComboTester</u> |
|                  | <675k      | Fail - Low         |
|                  | 5 Meg      | Pass               |
|                  | >11 Meg    | Fail - High        |

Connect the leads of the substitution box to the Base and to the Press to Test button. Press and hold the "Press to Test" button. Adjust the substitution box to each of the following resistance values. The ComboTester should display the proper indication.

|                   |            |                    |
|-------------------|------------|--------------------|
| 750k -100M range: | <u>Box</u> | <u>ComboTester</u> |
|                   | <675k      | Fail - Low         |
|                   | 5 Meg      | Pass               |
|                   | >110 Meg   | Fail - High        |

Values between these points can be checked at the user's discretion.

Should the unit not display the proper value, increase (or decrease) the resistance by 10%. If the correct value is still not displayed, return the unit to the factory for service.