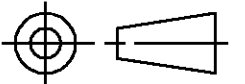


DO NOT SCALE  
DIMENSIONS IN mm

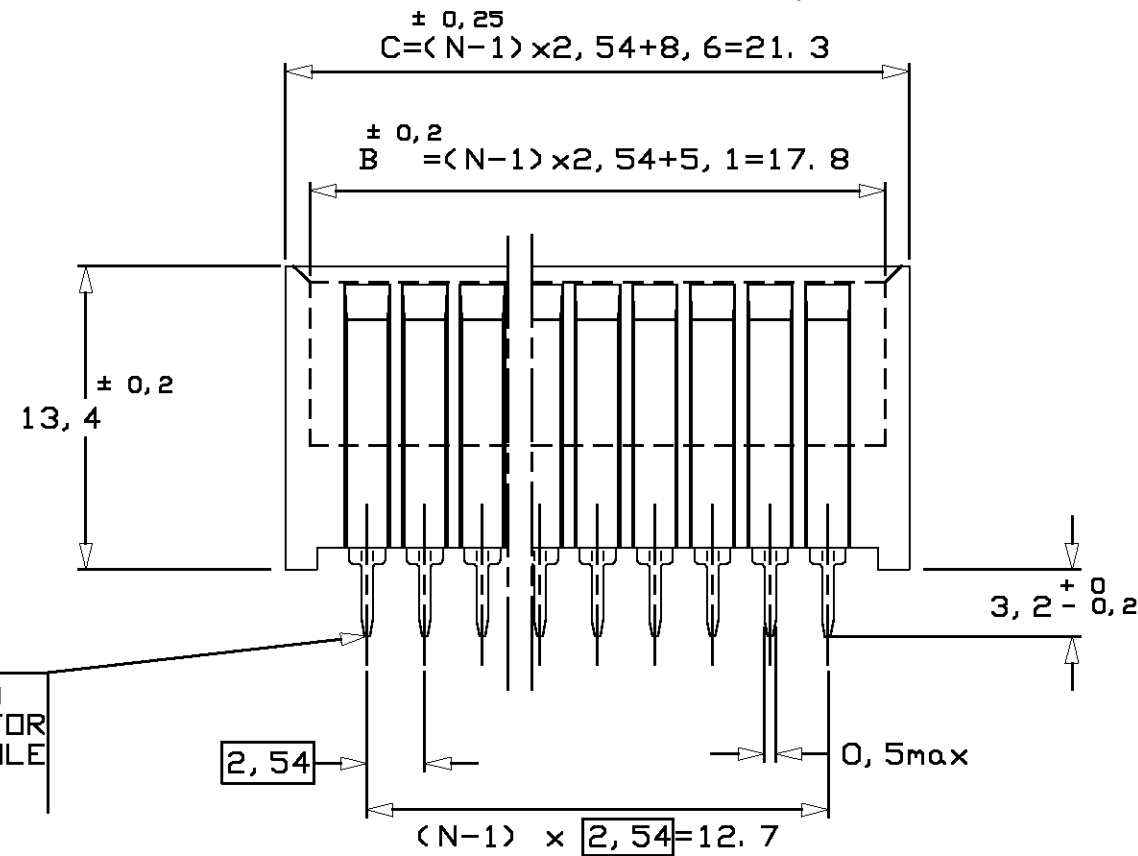
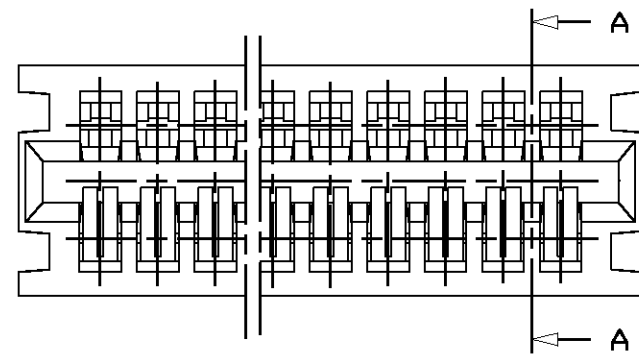
METRIC

THIRD ANGLE  
PROJECTION

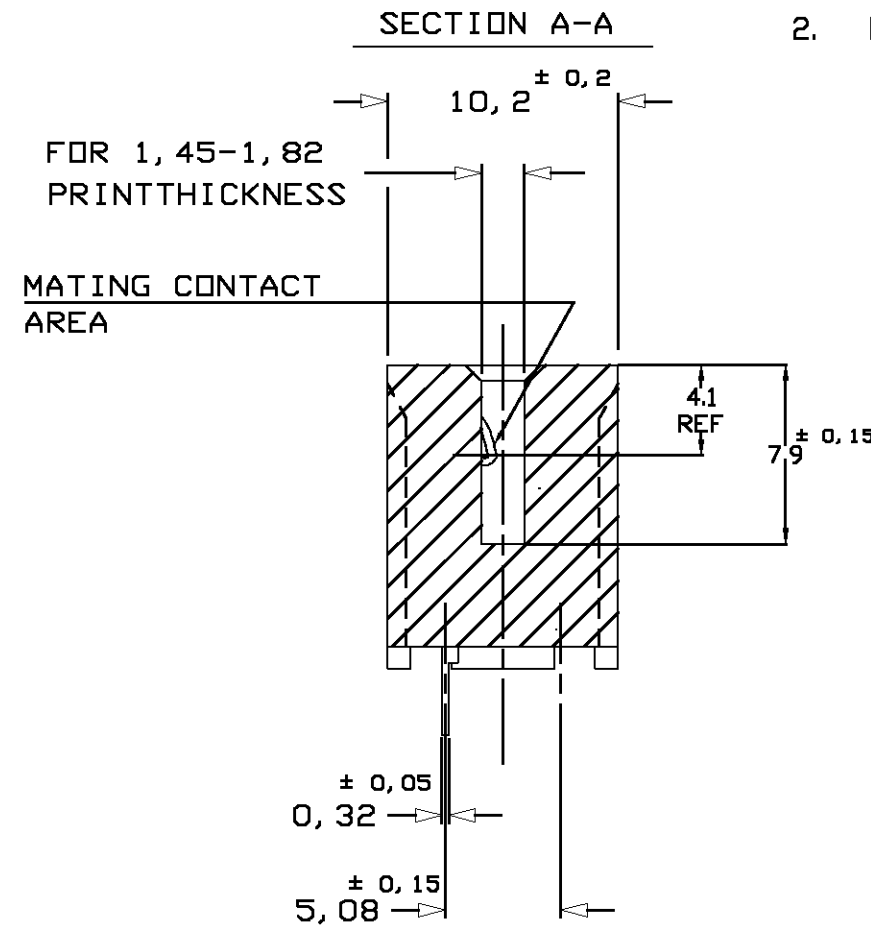


NOTES:

1. PRODUCT SPECIFICATION: 108-19041
2. PACKAGING: ON PLASTIC TUBES, BOXED



BOARD TO BOARD  
CONTACT POST FOR  
0,8min DIA HOLE



CONTACT: 0,4µm MIN SELECTIVE  
GOLD PLTD ON MATING CONTACT  
AREA AND 3,0µm MIN TIN PLTD  
ON CONTACT POST, OVER 1,25µm MIN  
Ni PLTD UNDERLAYER

HOUSING: THERMOPLASTIC  
POLYESTER 20% GF, UL94-v0  
COLOUR GREEN  
CONTACT: PH. BRONZE H06

166086-6

CUSTOMER  
DRAWING

FOR REFERENCE ONLY  
WILL NOT BE UPDATED

**tyco**  
**Electronics**

tyco Electronics AMP Italia S.p.A.  
C.so F.lli Cervi, 15 - Collegno (TO)

THIS DRAWING IS UNPUBLISHED | RELEASED FOR PUBLICATION JULY 1986

© COPYRIGHT 1986 BY AMP-HOLLAND B.V.  
ALL INTERNATIONAL RIGHTS RESERVED. AMP PRODUCTS MAY BE  
COVERED BY U.S. AND FOREIGN PATENTS AND/OR PATENTS PENDING.

H2	ET00-0047-04	D.C.	C.T.	05MAR2004
H1	ET00-0115-03	D.C.	C.T.	24JUN2003
H	ET00-0068-03	P.B	D.C	9-5-03
G	-	-	-	12-6-89
LTR.	REVISION RECORD	DR.	CHK.	DATE

DR. C. SOUSA	DATE 08-07-86
CHK. J. BROEKSTEEG	DATE 08-07-86
APP. L. V. SOEST	DATE 09-07-86

WIRE RANGE	NAME	6 POS. AMP-EDGE CONN., 2.54 PITCH SINGLE LOADED WITH B. T. B. CONTACTS
INSUL. RANGE		
SIZE A3	SHEET 1 OF 1	DRAWING NO C-166086
		REV. LTR. H2